

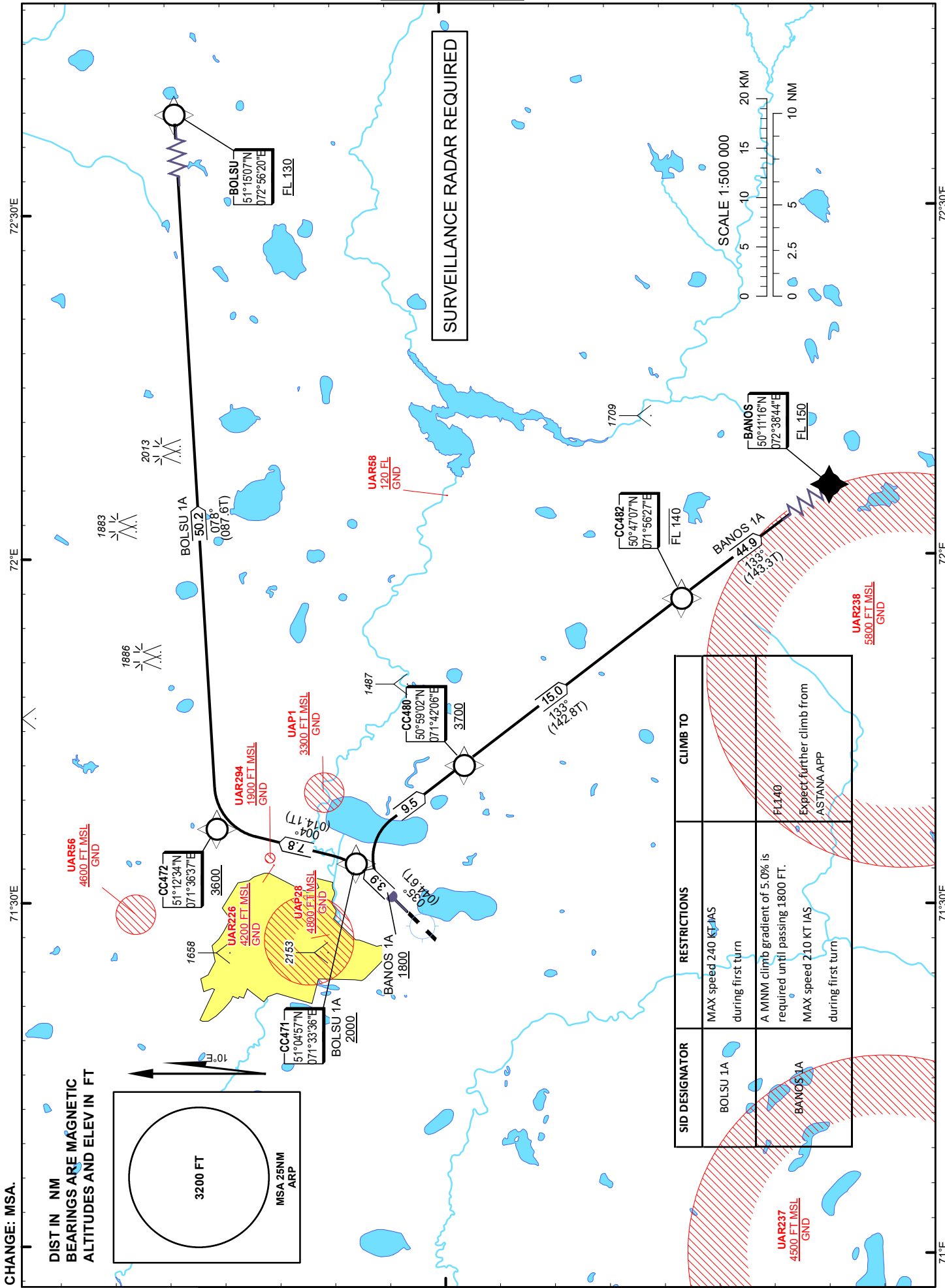
STANDARD DEPARTURE
CHART - INSTRUMENT
(SID) - ICAO

TRANSITION ALTITUDE
10000 FT

ASTANA TOWER 135.5
ASTANA APPROACH 124.6
ASTANA RADAR 120.7
ASTANA ATIS(EN) 129.5
ASTANA ATIS(RU) 128.3

BANOS 1A, BOLSU 1A
(RNAV 1 SID BASED ON GNSS)

ASTANA
NURSULTAN NAZARBAYEV
INTERNATIONAL AIRPORT
RWY 04



**TABULAR
DESCRIPTION**

| BANOS 1A RWY04 | | | | | | | | | | | |
|----------------|-----------------|---------------------|------------|---------------|-----------------------|-------------|----------------|-------------|----------|---------|--------------------------|
| Serial Number | Path Descriptor | Waypoint Identifier | Fly - over | Course °M(°T) | Magnetic Variation(°) | Distance NM | Turn Direction | Altitude FT | Speed KT | VPA (°) | Navigation Specification |
| 10 | CA | | - | 35(44.6) | 10 | 2.1 | - | +1800 | -210 | 2.9 | RNAV1 |
| 20 | DF | CC480 | - | | 10 | 9.5 | R | +3700 | | 1.9 | RNAV1 |
| 30 | TF | CC482 | - | 133(142.8) | 10 | 15 | - | -FL140 | | 1.9 | RNAV1 |
| 40 | TF | BANOS | - | 133(143.3) | 10 | 44.9 | - | +FL150 | | 1.9 | RNAV1 |

WAYPOINT LIST

| BANOS 1A | | |
|---------------------|-------------|-------------|
| Waypoint Identifier | Coordinates | |
| DER | 510210.90N | 0712915.64E |
| CC480 | 505902.26N | 0714206.01E |
| CC482 | 504707.26N | 0715627.27E |
| BANOS | 501116.00N | 0723844.00E |

**TABULAR
DESCRIPTION**

| BOLSU 1A RWY04 | | | | | | | | | | | |
|----------------|-----------------|---------------------|------------|---------------|-----------------------|-------------|----------------|-------------|----------|---------|--------------------------|
| Serial Number | Path Descriptor | Waypoint Identifier | Fly - over | Course °M(°T) | Magnetic Variation(°) | Distance NM | Turn Direction | Altitude FT | Speed KT | VPA (°) | Navigation Specification |
| 10 | CF | CC471 | - | 35(44.6) | 10 | 3.9 | - | +2000 | -240 | 1.9 | RNAV1 |
| 20 | TF | CC472 | - | 04(14.1) | 10 | 7.8 | L | +3600 | | 1.9 | RNAV1 |
| 30 | TF | BOLSU | - | 78(87.6) | 10 | 50.2 | R | +FL130 | | 1.9 | RNAV1 |

WAYPOINT LIST

| BOLSU 1A | | |
|---------------------|-------------|-------------|
| Waypoint Identifier | Coordinates | |
| DER | 510210.90N | 0712915.64E |
| CC471 | 510457.35N | 0713335.86E |
| CC472 | 511233.52N | 0713637.17E |
| BOLSU | 511507.00N | 0725620.00E |